



Market Indicators

TOP GAINER	%	TOP LOSER	%
HINDALCO	5.88	JINDALSTEL	(8.64)
SSLT	3.99	INFY	(1.15)
DRREDDY	3.76	HCLTECH	(0.87)
CAIRN	3.51	COALINDIA	(0.71)
INDUSINDBK	2.95	TATAPOWER	(0.56)

Broader Indices

Index	Closing Value	Change in (Pts)	Change (%)
MID-CAP	10820.21	+61.81	0.57
SMALL-CAP	11134.41	+22.59	0.20
IPO	2925.60	+13.39	0.46

Sectoral Indices

AUTO	19658.81	+236.18	1.22
BANKEX	21819.19	+243.57	1.13
CD	10554.20	+152.59	1.47
CG	17563.56	+292.87	1.70
FMCG	8138.08	+120.84	1.51
HC	17200.66	+306.70	1.82
IT	11720.07	(37.10)	(0.32)
METAL	9677.97	+112.26	1.17
OIL&GAS	9486.18	+134.59	1.44
POWER	2220.65	+20.94	0.95
PSU	7825.99	+55.37	0.71
REALTY	1766.95	+7.75	0.44
TECK	6392.79	(10.18)	(0.16)

Currency Movement (RBI Reference Rate)

USDINR	62.69	0.13	↓
GBPINR	92.99	0.17	↑
EURINR	66.37	0.20	↓
JPYINR	51.69	0.15	↓

Market Breadth

Exchange	Advances	Declines	Unchanged
BSE	1351	1456	132
NSE	795	716	72

Market Statistics

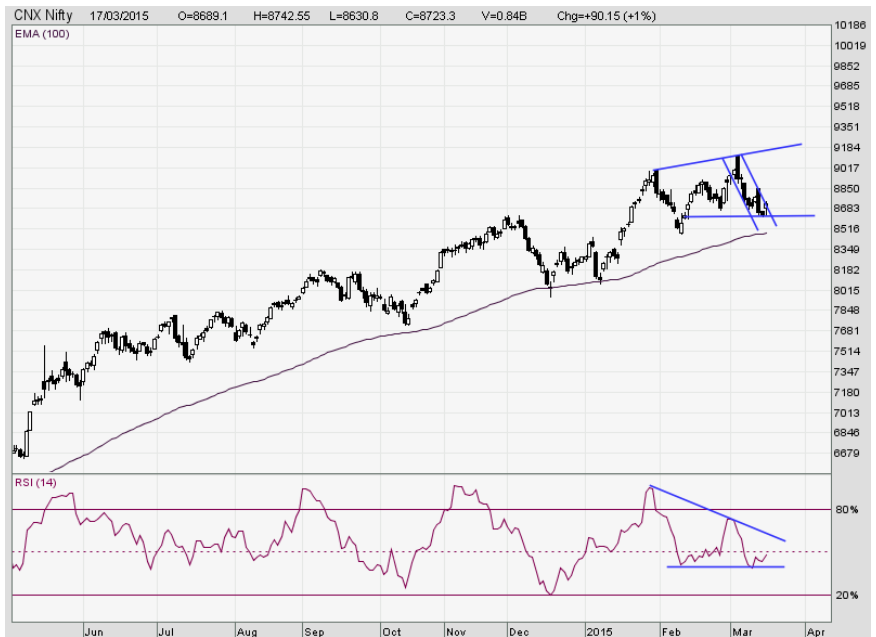
ACTION	FII (₹) Cr.	DII (₹) Cr.
CASH BUY	5123.12	1370.51
CASH SELL	4857.60	1614.20
(Provisional)	+265.52	(243.69)

FII Derivatives	Buy (Cr.)	(Sell Cr.)	Net (Cr.)
Index Futures	1206.77	1694.03	(487.27)
Index Options	21945.85	21235.96	709.89
Stock Futures	3147.40	2348.05	799.35
Stock Options	2237.55	2230.96	6.58
Total			+1028.56

*Source: BSE, NSE, BI, Capital Market & rbi.org.in

Exhibit 1: NIFTY

Daily Candle Stick Chart



NIFTY OUTLOOK

In Yesterday's trader Nifty opened with gap up on back of strong global cues and made high of 8738 during first half later heavy selling pressure seen in the second half and trade volatile. The buying seen in the last hour of trade, lifting index to new day' high of 8742 and finally closed at 8723.30 with gain of 90.15 points.

- ◆ Yesterday's price action formed a "Hammer" candle with long lower shadow with small body indicates intraday volatility. Nevertheless of high volatility Nifty produced 100 points sharp recovery from day's low highlights a buying momentum.
- ◆ At present Nifty having support at 8652 level which attributes a 78% Fibonacci retracement of the previous uptrend from 8623 to 9191. The 8640 levels also happen to be previous resistance levels which should now act as support for downsides as per change of polarity rule.
- ◆ However Nifty may hold the February 2015 low of 8430 - 8470 level before eventually resuming trend as the 100 days EMA placed to the 8470 level and the rising trend line adjoining three significant low Oct. 16,2014 (7748),Dec. 17,2014(8029)and Jan.7,2015 (8102) provides decent support to the indices.
- ◆ As mentioned the Oct. 2014 to Dec.14 and Jan. 2015 indices preciously taking support from this trend line and bottomed out near to the 100 days EMA.

Looking to above technical evidence long position could be suggest to create long position in Nifty futures in range of 8665 - 8640 for Target of 8750 with stop loss of 8600 level

Index Movement

MOVEMENT	SENSEX	NIFTY
OPEN	28595.00	8689.10
HIGH	28784.35	8742.55
LOW	28435.45	8630.80
CLOSE	28736.38	8723.30
CHANGE IN PTS	+298.67	+90.15
CHANGE IN %	1.05%	1.04%



Pivot Table

Symbol	S2	S1	Pivot Point	R1	R2
Sensex	28303	28519	28652	2886 9	29001
Nifty	8587	8655	8699	8767	8811
Bank Nifty Future	18723	18927	19063	1926 8	19404
Nifty future	8597	8669	8717	8788	8837



Weekly Economic Calendar

Date	Impact	IST	Location	Indicator	Forecast	Previous	Actual
March 18	Low	14:30	EURO ZONE	Italian Trade Balance	4.32B	5.76B	
	High	15:00	BRITAIN	Average Earnings Index 3m/y	0.022	0.021	
	High	15:00	BRITAIN	Claimant Count Change	-31.0K	-38.6K	
	High	15:00	BRITAIN	MPC Official Bank Rate Votes	0-0-9	0-0-9	
	Medium	15:00	BRITAIN	MPC Asset Purchase Facility Votes	0-0-9	0-0-9	
	Medium	15:00	BRITAIN	Unemployment Rate	0.056	0.057	
	Low	15:30	EURO ZONE	Trade Balance	21.1B	23.3B	
	Low	Tentative	EURO ZONE	German 10-y Bond Auction		0.37 1.4	
	High	18:00	BRITAIN	Annual Budget Release			
	Medium	20:00	USA	Crude Oil Inventories		4.5M	
	High	23:30	USA	FOMC Economic Projections			
	High	23:30	USA	FOMC Statement			
	High	23:30	USA	Federal Funds Rate	<0.25%	<0.25%	
	March 19	High	00:00	USA	FOMC Press Conference		
Medium		14:30	EURO ZONE	ECB Economic Bulletin			
Low		Tentative	BRITAIN	10-y Bond Auction		1.62 1.6	
High		15:45	EURO ZONE	Targeted LTRO		129.8B	
Medium		Day 1	EURO ZONE	EU Economic Summit			
High		18:00	USA	Unemployment Claims	297K	289K	
Medium		18:00	USA	Current Account	-103B	-100B	
High		19:30	USA	Philly Fed Manufacturing Index	7.3	5.2	
Low		19:30	USA	CB Leading Index (M o M)	0.003	0.002	
Low		20:00	USA	Natural Gas Storage		-198B	
March 20	Low	12:30	EURO ZONE	German PPI (M o M)	0.002	-0.006	
	Low	14:30	EURO ZONE	Current Account	21.3B	17.8B	
	Medium	15:00	BRITAIN	Public Sector Net Borrowing	7.7B	-9.4B	
	Medium	Day 2	EURO ZONE	EU Economic Summit			
	Medium	19:50	USA	FOMC Member Lockhart Speaks			



DISCLAIMER: This document is not for public distribution and has been furnished to you solely for your information and must not be reproduced or redistributed to any other person. Persons into whose possession this document may come are required to observe these restrictions.

The information and views in this report, our website & all the service we provide are believed to be reliable, but we do not accept any responsibility (or liability) for errors of fact or opinion. Users have the right to choose the products that suits them the most. Investment in Stocks has its own risks. Sincere efforts have been made to present the right investment perspective. The information contained herein is based on analysis and up on sources that we consider reliable. We, however, do not vouch for the accuracy or the completeness thereof. This material is for personal information and we are not responsible for any loss Incurred based upon it & take no responsibility whatsoever for any financial profits or loss which may arise from the recommendations above.

Recipients of this material should rely on their own investigations and take their own professional advice. Each recipient of this document should make such investigations as it deems necessary to arrive at an independent evaluation of an investment in the securities of companies referred to in this document including the merits and risks involved), and should consult their own advisors to determine the merits and risks of such an investment. Price and value of the investments referred to in this material may go up or down. Past performance is not a guide for future performance. Certain transactions - futures, options and other derivatives as well as non-investment grade securities - involve substantial risks and are not suitable for all investors. Reports based on technical analysis centers on studying charts of a stock's price movement and trading volume, as opposed to focusing on a company's fundamentals and as such, may not match with a report on a company's fundamentals.

All the Rights are reserved.

Contact Us: research@urjatrade.com

Web: www.LAAVLE.com

Registration: NSE - CASH INB230696132 | NSE - FO INF230696132 | BSE - CASH INB010696137

URJA INVESTMENT PTE. LTD.

Private & Confidential